



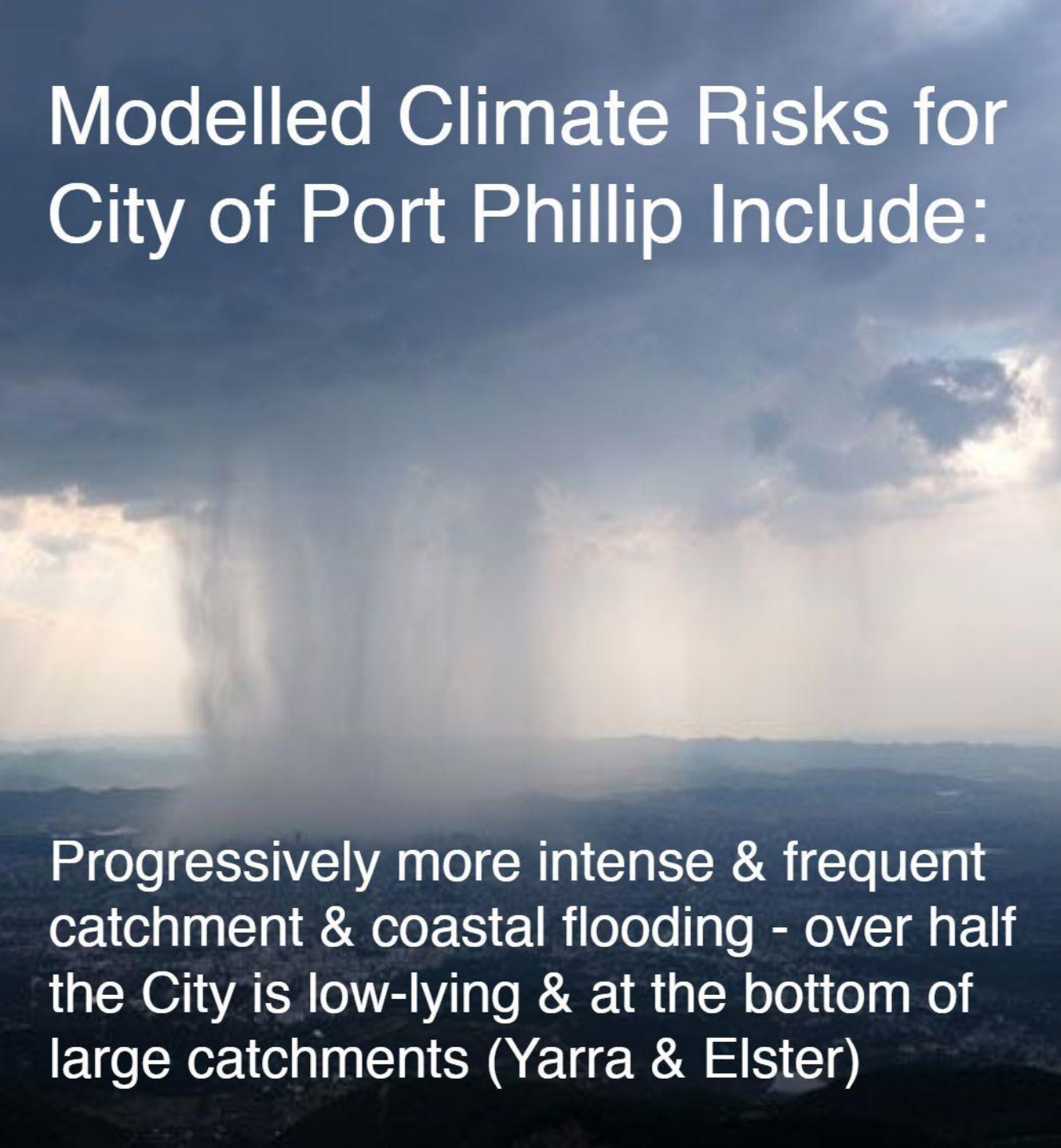
Adapt To Living Well With More Heat & Water

Some Ideas & Solutions for Action Now


Lalitha Ramachandran

From presentation @ Phoenix Theatre,
February 2020

Modelled Climate Risks for City of Port Phillip Include:



Progressively more intense & frequent catchment & coastal flooding - over half the City is low-lying & at the bottom of large catchments (Yarra & Elster)



Increased urban heat island (UHI) impacts - dense & urban spaces with high radiating surfaces, narrow streets & low levels of urban forest



Living Better with More Water & Heat Means...

- Be Risk-Adept, not Risk-Averse
- Collective & Collaborative Effort Between Private & Public Realms - Over Half the City is Real Estate
- Progressive Adaptation from Now
- Be Brave & Open! Long-Term Solutions to Long-Term Problems
- Build Climate Resilience through Infrastructure & Asset Resilience.

Actions Within 5 Years.....

Develop & Use
Integrated Future Flood Models
+ UHI Models to Enable -

Planning & Building Resilience Conditions for
Developments, Renovations & Body Corporates

Require **Resilience-Supporting Public
Infrastructure & Assets**

Advocate for **upstream flood retention** & detention;
Initiate **workable concepts for living shorelines** &
flood resilient spaces

Enable **green infrastructure on heritage**

Lead by example.

&

Establish Appropriate
Resilience Strategies for
Your Home -

Urban Forest & Green Infrastructure for exterior
walls & spaces - especially treeless streets, back lane
fences & multi-storey buildings.

Storm-rainwater retention & detention at your home
for reuse & to reduce flood impacts

Planning a renovation? **Build for resilience** to your
climate risks.

Tenant? Discuss options to install
solutions for more better rent-deals ~
**you are making their asset more
resilient** after all!

The City

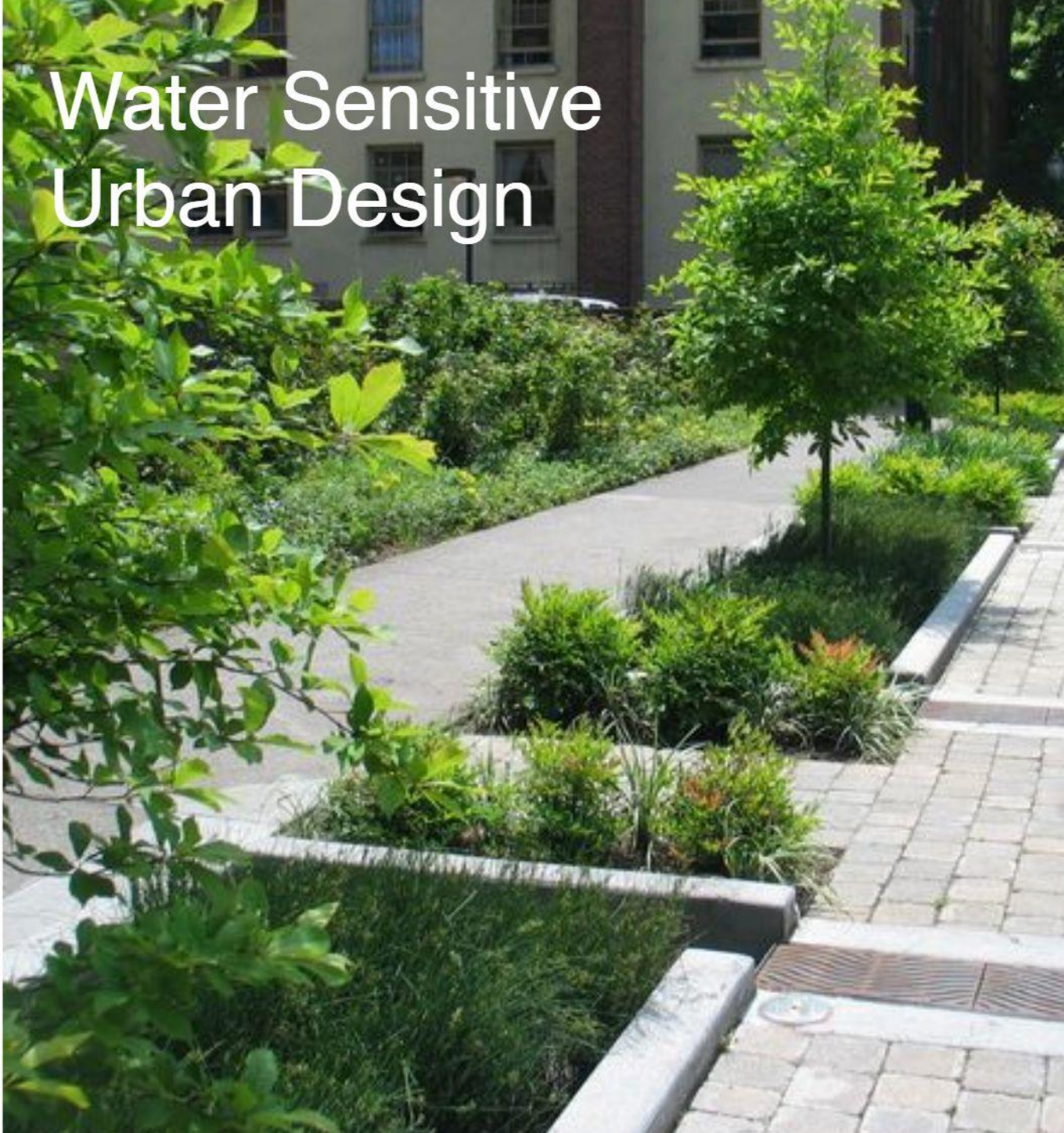
You, the community

How? Street-Scale Solutions to UHI - Urban Forests & Green Infrastructure

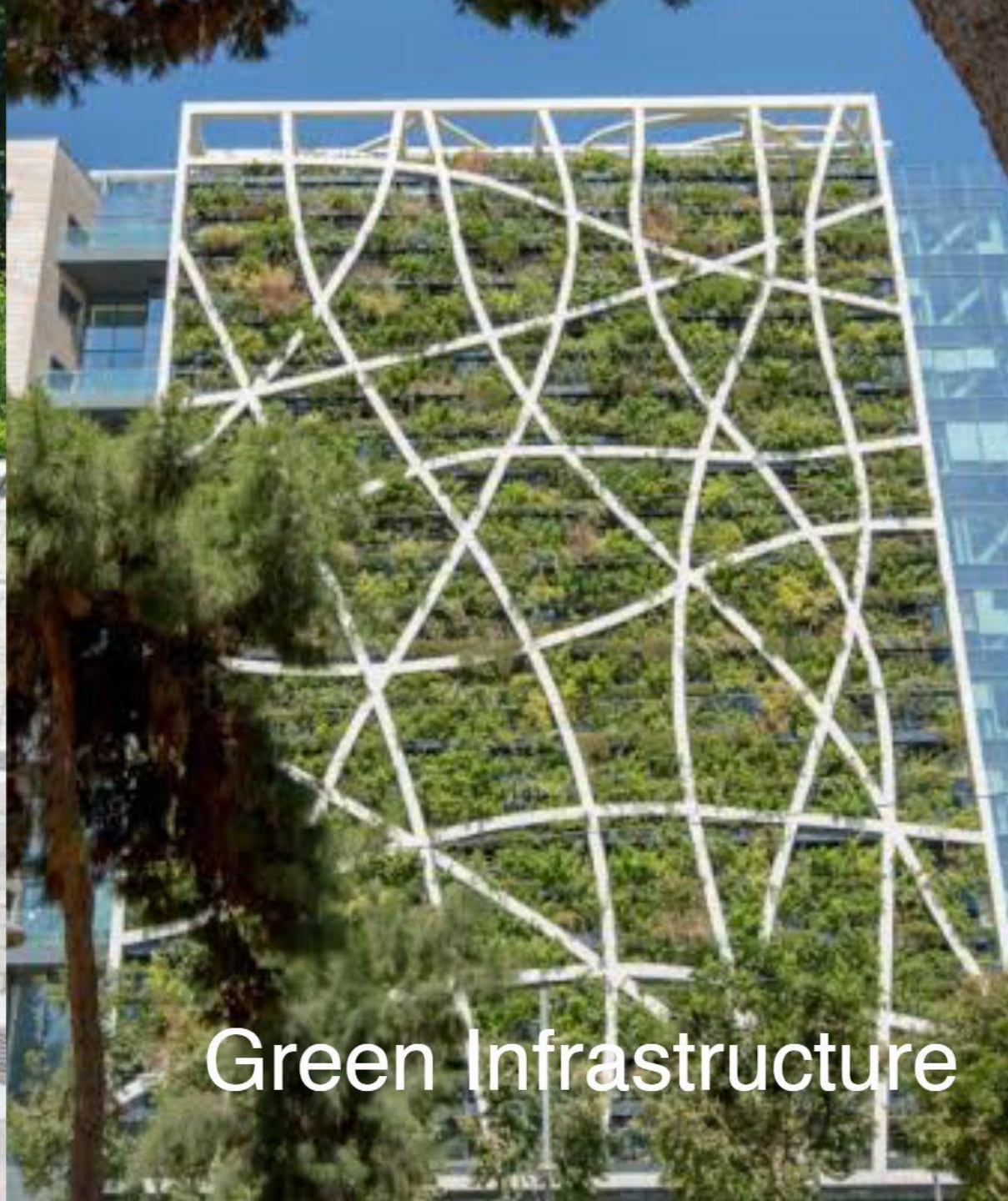
- **Evapo-transpirative urban forest** of street trees, verges & parks using WSUD
- **Enable green infrastructure** on heritage & multi-storey residential
- Conditions to **reduce use of radiative external cladding**
- **Stretch goals** & types of greening for city's suburbs based on urban typologies
- **Increase water use in the landscape** through WSUD & more permeable surfaces
- **Enable conditions to drive green infrastructure** on public footpaths & private walls/fences especially on treeless streets



Water Sensitive Urban Design



Green Infrastructure



3. Actions For Your Home & Community

1. Establish suitable wall plants to create extra coolth & thermal comfort especially if your front wall faces a treeless street

2. Initiate a relevant street-based community greening project that creates summer coolth

3. Increase water in the landscape in warm weather

How? Street-Scale Solutions to Floods - Stormwater Detention

- **Street-scale & building-scale storage systems** help to reduce flood impacts - must consider local floods in detention capacity
- **Increase permeability** in footpaths, back lanes & parking spaces
- **Enable water-flow & use in the landscape** - Flood management through urban design features

How? Coastal Adaptation over Long Term

- **Living Shorelines** - Coastal wetlands reduce storm surge impacts, protect coastlines from erosion and absorb some coastal floodwaters
- **Polders** - Assist to withhold tidal impacts and protect infrastructure & homes
- **Flood Resilient Housing & Infrastructure where relevant** - Consider 'floating' houses, structures & infrastructure to become increasingly resilient to frequent flooding.



Emerging Options for Flood Resilient Streetscapes



3 Actions For Your Home & Community



1. Maximise rainwater capture & reuse -
install tanks under your verandah, slimline wall tanks, or roof tanks

2. Increase permeability in your outdoor spaces - footpaths, driveways & patios

3. Use smart flood damage prevention devices when you need them - vent covers, floodsac devices for doors, clean gutters & sweep up leaf debris before storms